



**QuantumControls**

Electrical Construction + Automation Integration

*Proven capable.*

QuantumControls recognizes the value and need for safe work practices. The last thing you should be concerned with is the safety of the vendor completing your work. At QCI, our technicians are required to successfully complete electrical safe-work-practice training, including instruction for OSHA, MSHA, high-reach and confined space, First Aid, CPR, and NFPA 70E. Additionally, QCI has also recently implemented an Arc Flash Protection Program for all job site personnel.





Why choose QuantumControls for all of your electrical construction and automation integration needs?

---

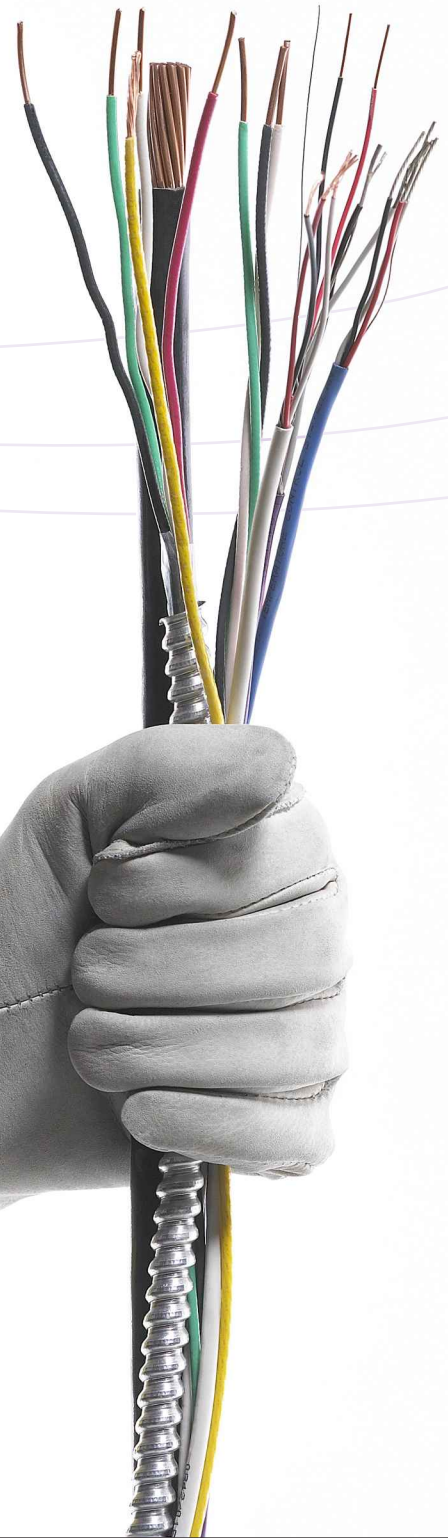
---

---

Start with our reputation, one that is built on years of experience serving many of the big name businesses in and around the region. We've been able to establish long-term relationships with these customers by successfully delivering an exceptional level of service, a consistent quality level of work, and on-time job completion, all while confronting every challenge in the most responsive and efficient manner.

New Construction. Retrofits. System Upgrades and Maintenance. Automation Control. Service & Distribution. Troubleshooting. Commercial and Industrial Installation. These are just a few of the tasks QCI excels in. We take on a leadership role in our working relationships with customers, providing guidance and direction in identifying and implementing intelligent solutions that are tailored for your specific need or task.

Today, more and more companies are being challenged to find ways to stretch their dollars further and further – including the money they spend on service support. For these companies it is critical to understand the difference between price and cost when selecting a service supplier. We know that price is a dollar amount on a contract. Cost, on the other hand, is the sum of the contract price plus the cost of change orders, the cost of lost business due to late project completion, the cost of increased customer oversight of the service vendor's performance, and more. At QCI, we review and plan each project to assure feasibility and success for us – and our customers, to reduce the overall cost of a project while working to deliver on a contracted price. Only by delivering effective custom solutions at a fair price has QCI been able to grow into a key regional provider of electrical construction and automation integration services.



QuantumControls is a different kind of electrical construction company. Our difference is highlighted in the menu of core services we deliver to our customers – services that encompass complex tasks such as power distribution, automation integration and process controls to more basic needs like on-going maintenance. This unique collection of services positions QCI as a preferred resource to customers in the commercial, industrial, manufacturing and institutional markets.

**CONSTRUCTION**

- Service & Distribution
- Auxiliary Power
- Lighting Systems
- Tenant Fit-Out
- Renovations
- Special Systems Installation



**CONTROL PANELS**

- Design
- Fabrication
- Installation
- Relocation
- Retrofit
- Start- Up Assistance



**INTEGRATION**

- Equipment Start-Up
- PLC Programming
- HMI Programming
- AutoCAD
- Automation Process



**SERVICE & MAINTENANCE**

- Infra-Red Thermal Imaging
- Equipment Repairs
- Bucket Truck Needs
- Ballasts & Light Repairs
- Maintenance Support
- Preventive Maintenance
- Ground Testing
- Emergency Service 24/7

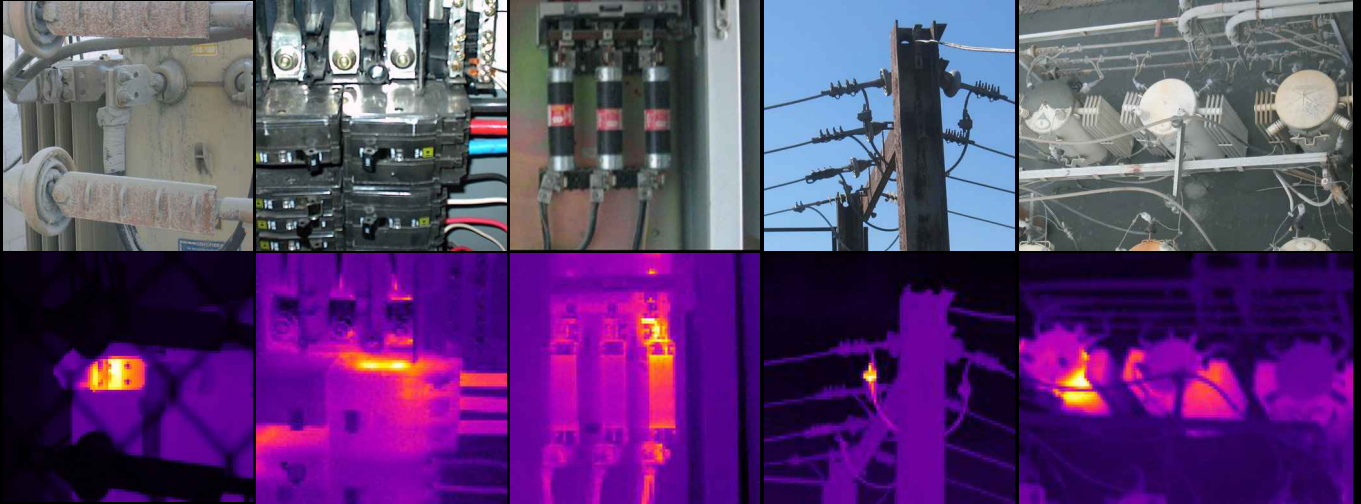


Knowledge founded on experience in delivering intelligent solutions and skilled service at a fair price. It's why we've been proven capable. You can feel confident in calling QuantumControls for prompt and professional attention for all of your electrical construction and automation integration needs.



## INFRA-RED THERMAL IMAGING

Know before it goes. Find problems before they become failures.



Infrared Thermal Imaging is a predictive testing and analysis procedure that detects difference in heat levels; the patterns the heat produces tells the story of what is happening inside your equipment. The heat signature revealed in the image can indicate a pending component or system failure. With regular infrared thermal image inspections you can reduce or eliminate the unexpected shutdowns and costly downtime often attributed to equipment failure. Ask QuantumControls to show you how this technology can help you manage your power systems and save money.



# QuantumControls

*Powering the possibilities of your business.*

QuantumControls, Inc.

802 Interchange Boulevard

Newark, DE 19711

Ph 302 737 7042

Fx 302 737 1763

Toll Free 866 724 4636

[www.quantumcontrolsinc.com](http://www.quantumcontrolsinc.com)

*Licensed in Delaware & Maryland*

*Images left to right: load side of transformer connection, contact inside a circuit breaker, fuseholder, high voltage splice, plugged cooling fin in transformer causing overheating*